

This is a true Copy of the Original Plat of Record of "Blocks 1, 2 & 3 HOBE SOUND" Plat Book 10, Page 9, Palm Beach County, Florida, New Martin County.

Juan E. Barb  
REGISTERED LAND SURVEYOR  
FLORIDA CERTIFICATE NO. 688

State of Florida  
County of Palm Beach } ss  
This Instrument was Filed for Record at 5 PM this 24<sup>th</sup> day of March, 1924 and duly Recorded on the 29 day of March, 1924, in Book 10, of Plats on Page 9, Record Verified.

Fred E. Conno.  
CLERK CIRCUIT COURT  
BY: \_\_\_\_\_  
DEPUTY CLERK

# AMENDED PLAT OF BLOCKS 1, 2 AND 3 HOBE SOUND FLORIDA

State of Florida  
County of Palm Beach  
Know all men by these presents, that the Olympia Improvement Corporation, owner in fee simple of the land shown on this plat, has caused to be surveyed and platted Amended Plat of Blocks 1, 2, and 3; Hobe Sound, Florida, as filed in Plat Book No. 2, Page 99 of Palm Beach County Records, and hereby dedicates to the perpetual use of the public the streets and alleys shown hereon, reserving unto itself, its successors and assigns the right at any time to use the said streets and alleys for the purposes of laying, using and maintaining water pipes, sewers, electric transmission lines, telephone wires gas pipe or other public utilities, said Olympia Improvement Corporation hereby states that said resurvey and replatting is amendatory of and supplemental to Blocks 1, 2 and 3 on said plat of Hobe Sound, filed in Plat Book 2, Page 99, Palm Beach County Records.

Olympia Improvement Corporation  
Attest: \_\_\_\_\_  
Frank W. Hannon By Malcolm Meacham  
Secretary President

State of Florida  
County of Palm Beach  
Before me, this day, personally appeared Malcolm Meacham and Frank M. Hannon, the President and the Secretary, respectively, of the Olympia Improvement Corporation, a Florida corporation, and acknowledged before me that they executed the dedication hereon shown for the uses and purposes therein stated on behalf of said corporation.

Witness my hand and seal this 24 day of March A.D. 1924  
J. H. Pierce  
Notary Public

My Commission expires: 5/28/24

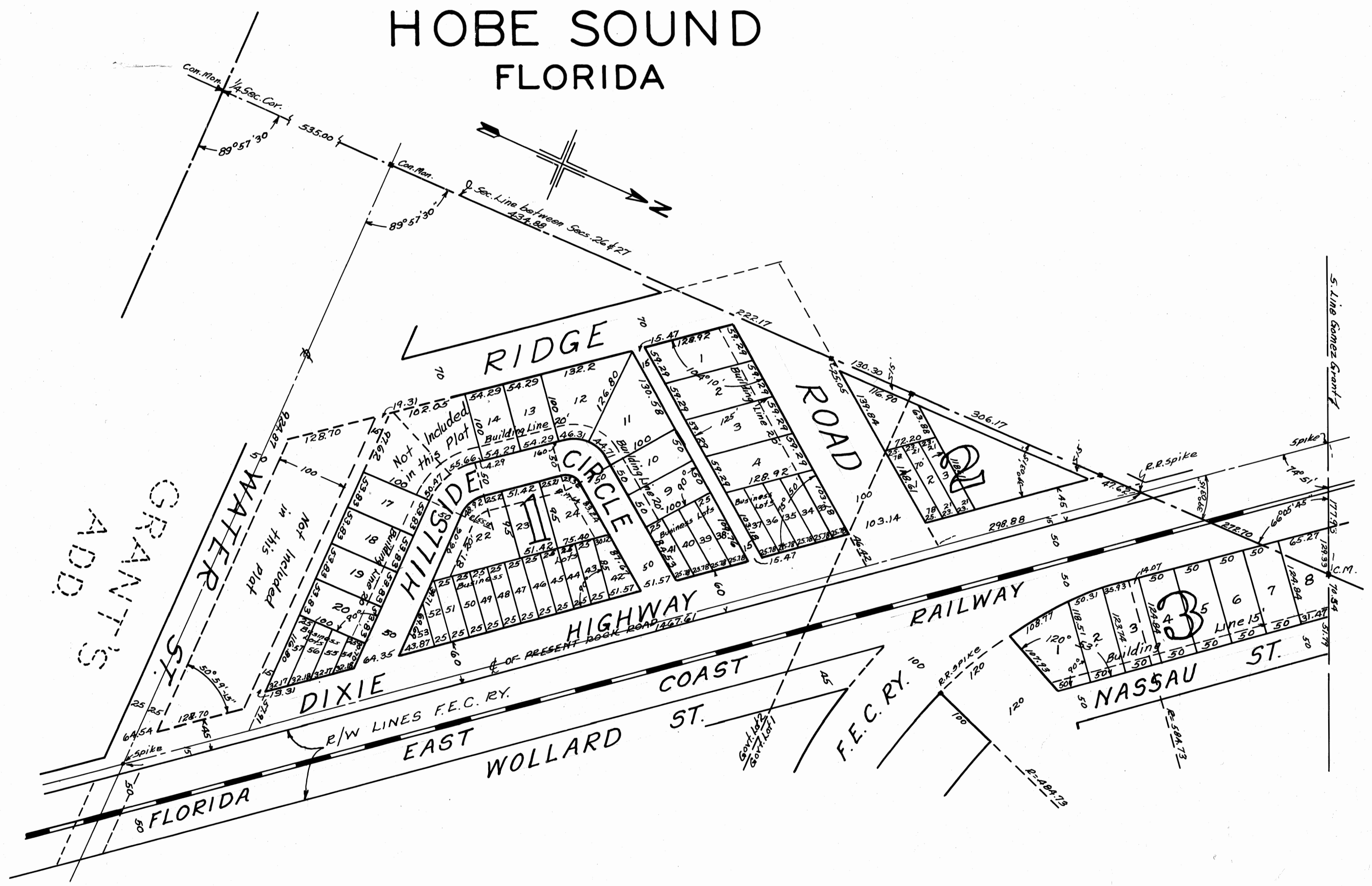
State of Florida  
County of Palm Beach  
I hereby certify, that the attached plat is a correct representation of a survey made under our direction and is accurate to the best of our knowledge and belief

Carr & McFadden, inc.  
Civil Engineers

By Hayden McFadden  
Fla. Eng. Cert. No. 280  
Subscribed and sworn to before me this 24<sup>th</sup> day of March A.D. 1924.

J. H. Pierce Notary Public

My Commission expires: 5/28/24



Scale 1"=100'

Surveyed and Platted by  
**Carr & McFadden, INC.**  
CIVIL ENGINEERS  
FLA. STATE ENG. CERTS. NOS. 115 & 280  
WEST PALM BEACH, FLORIDA

DRAWING NO. 2032